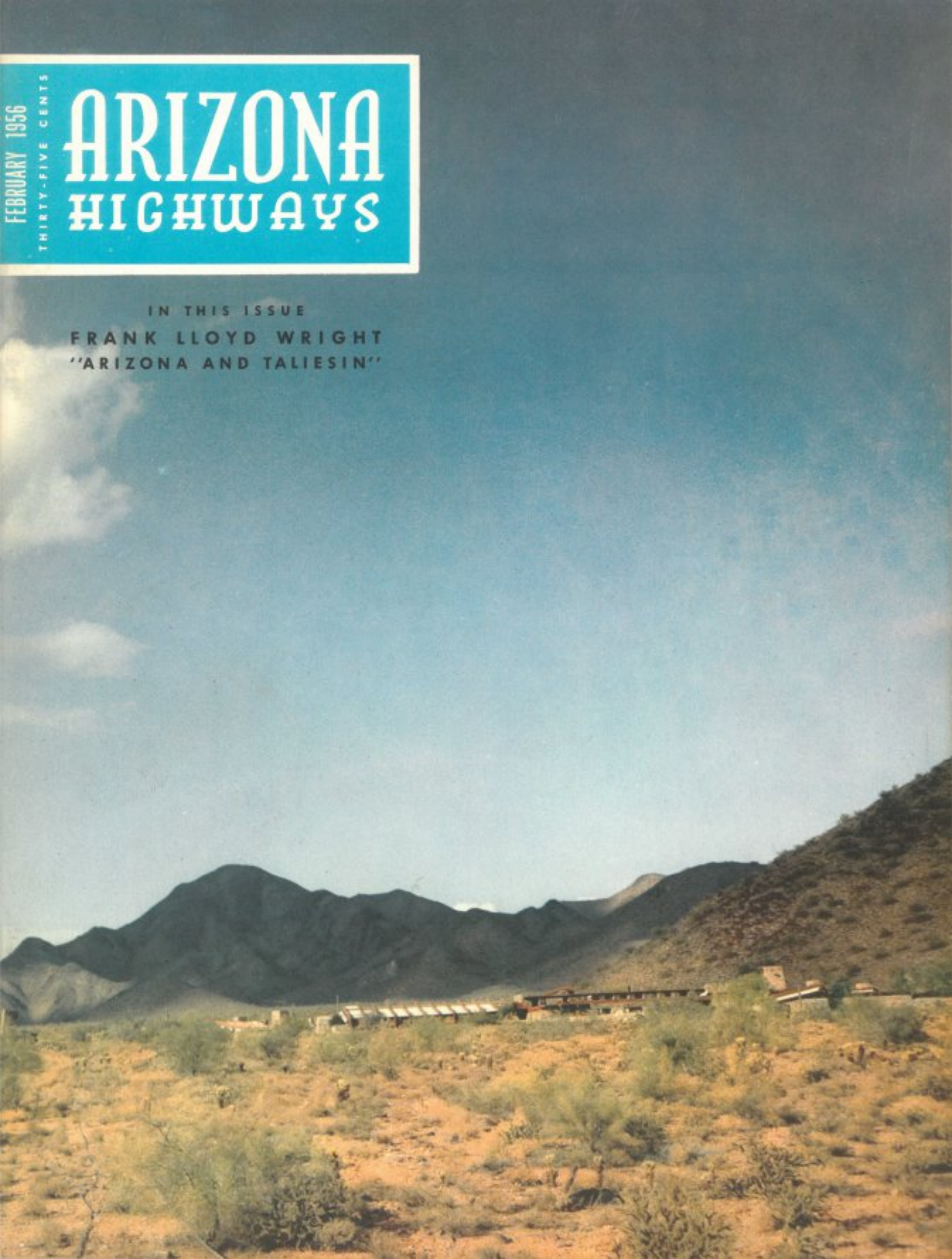


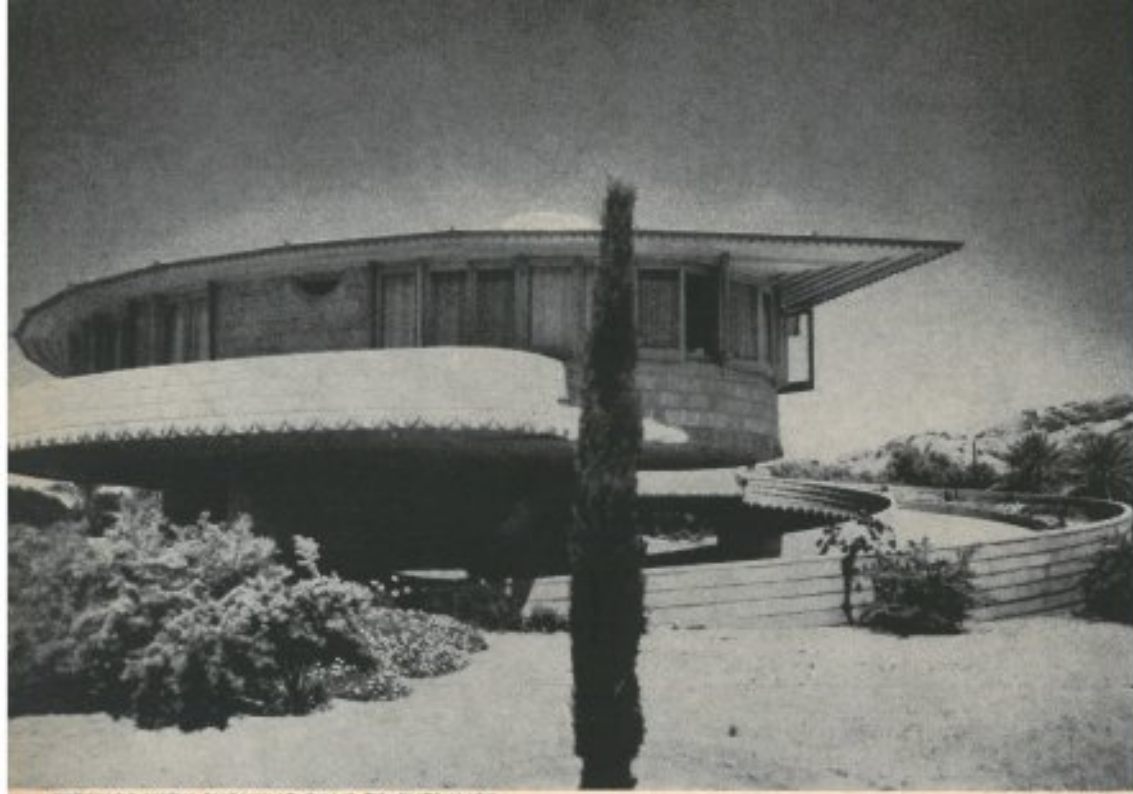
FEBRUARY 1956  
THIRTY-FIVE CENTS

# ARIZONA HIGHWAYS

IN THIS ISSUE  
FRANK LLOYD WRIGHT  
"ARIZONA AND TALIESIN"

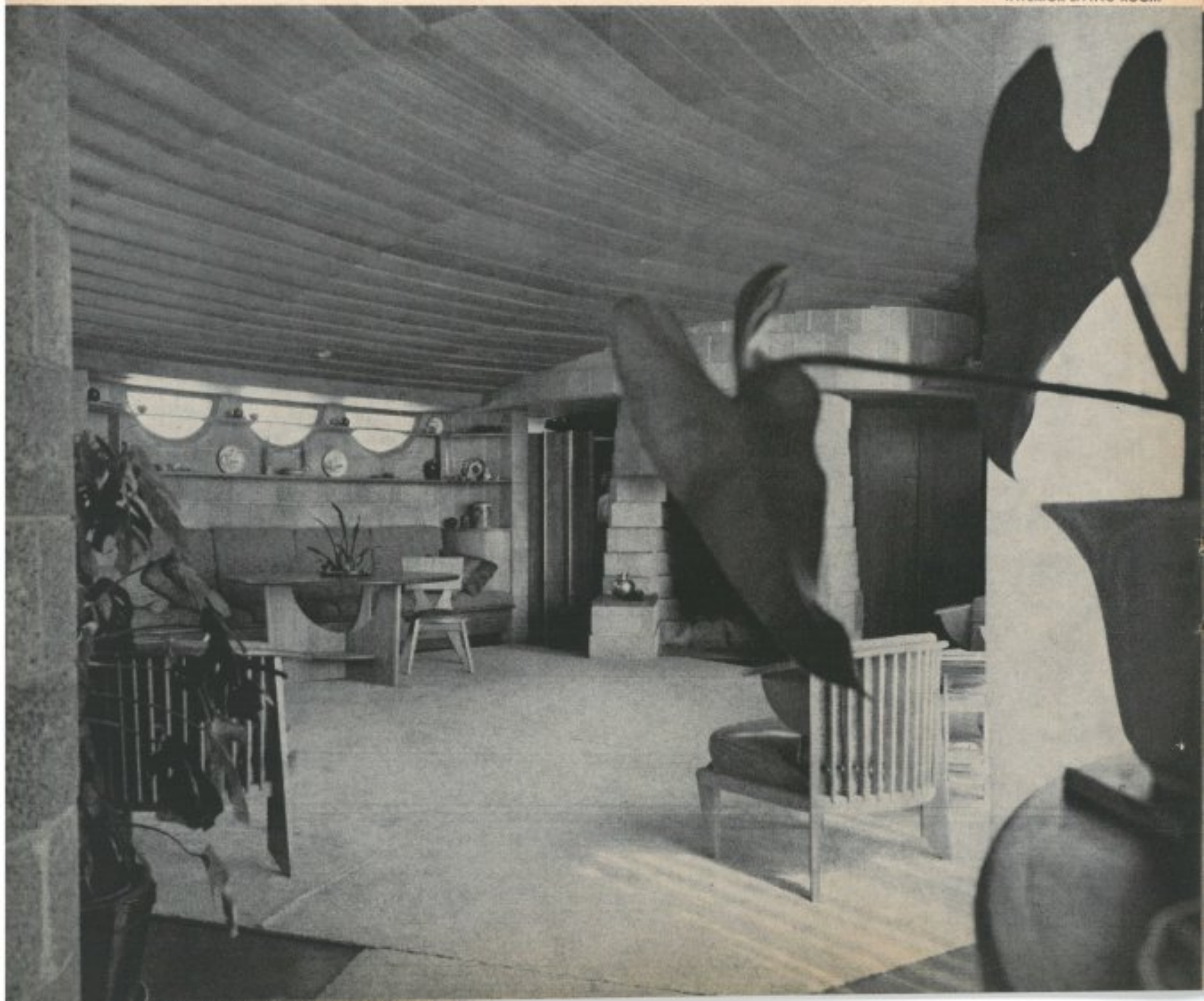


**DAVID WRIGHT PATIO-**

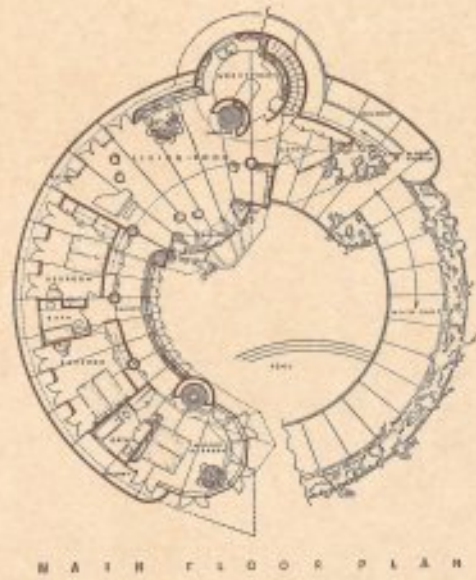
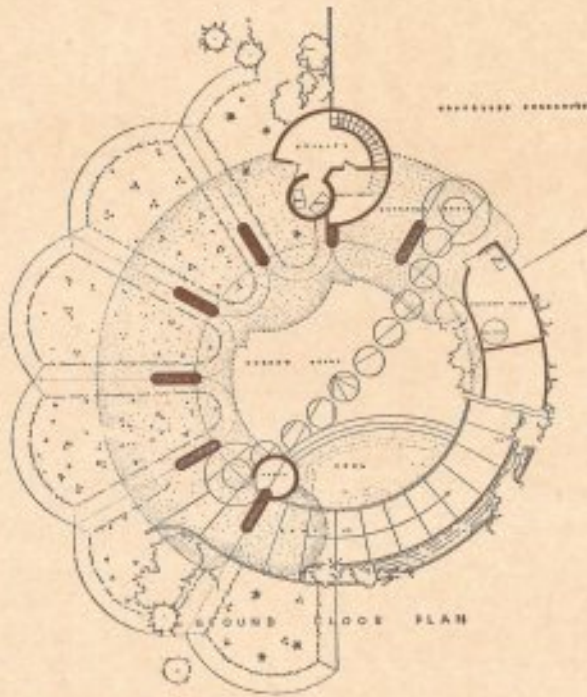


EXTERIOR VIEW SHOWING RAMP TO ENTRANCE

INTERIOR LIVING ROOM



# HOUSE IN CITRUS GROVE AT THE FOOT OF CAMELBACK MOUNTAIN



GENERAL VIEW FROM THE SOUTHWEST





EXTERIOR OF THE DAVID WRIGHT PATIO-HOUSE  
PATIO-HOUSE TOWARD CAMELBACK



BENJAMIN ADELMAN USONIAN TYPE COTTAGE

